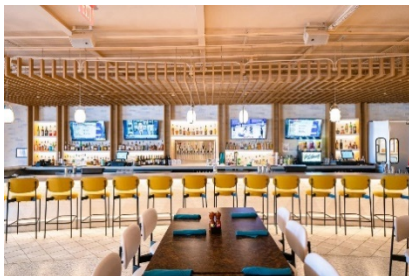




For Immediate Release:

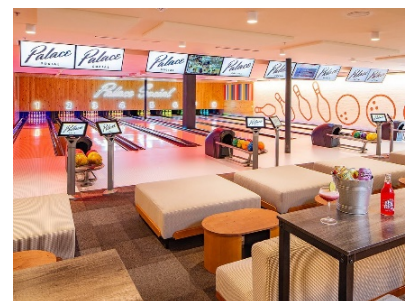
Amusement Entertainment Management, LLC (AEM) Coordinates Launch of Palace Social in Houston, Texas

Houston, Texas -- Palace Social, a 29,000 square foot bowling-anchored multi-attraction venue has opened in Houston, commemorating the rebirth of the original Palace Lanes, a hallmark property in the City's Bellaire section.



Palace Social has remastered the concept of “social” by combining one of the area’s largest bar/lounge offerings with a chef-driven culinary experience and immersive attractions line up. In addition to new state-of-the-art bowling equipment, Palace delivers on the promise of fun with large scale multi-sport golf simulators, a 16-seat XD motion theater, Omni Virtual Reality Arena, and a full compliment of amusement game equipment. Topping off the guest experience is a 22-seat E-sports lounge that offers gamers a global play stage by which to showcase their talents.

Jerry Merola, Managing Partner at AEM, commented “Palace Social has crafted a very unique operating platform that captures the essence of one of Houston’s most storied brands while elevating the entertainment experience to new levels. Our hats are off to Mr. Billy Forney and his team in completing and launching this project during one of the most challenging economic times in our country’s history.”



Amusement Entertainment Management, LLC, under the guidance of Managing Partner Jerry Merola, offers a full range of consulting services, including early-stage feasibility analysis, business plan development, funding assistance, and conceptual design and layout services. The Firm is a leading expert in family entertainment center site and attraction selection, having developed more than 400 venues in its 25-year history. For more information, please visit www.aemllc.com or contact the firm’s client hotline at 800.253.4045.